

BLOCK SPLITTER

OPERATING INSTRUCTION



CONTENT

I . INTRODUCTION	- 2 -
II.CAUTION.....	- 2 -
III.AJUSTMENTS	- 3 -
IV.OPERATION	- 3 -
V .CHANGING CUTTER BLADES	- 5 -
VI.SYMBOLS.....	- 5 -
VII.MACHINE TROUBLESHOOTING	- 6 -
VIII.SPARE PARTS LIST	- 7 -

I . INTRODUCTION

We have taken care in the design, manufacture and testing of this product. Should service or spare parts be required, prompt and efficient service is available from our branches.

General Safety instructions for the Operation of Equipment Our factory's goal are to produce equipment that helps the operator work safely and efficiently. The most important safety device for this or any tool is the operator. Care and good judgments are the best protection against injury. All possible hazards cannot be covered here, but we have tried to highlight some of the important items, individuals should look for and obey Caution, Warning and Danger signs placed on equipment, and displayed in the workplace. Operators should read and follow safety instructions packed with each product.

Learn how each machine works. Even if you have previously used similar machines, carefully check out each machine before you use it .Get the "feel" of it and know its capabilities, limitations, potential hazards, how it operates, and how it stops. We have no duty if person don't operate as instruction said.

II.CAUTION

- ◆ The product is for block splitting only. Other use is forbidden.
- ◆ The machine is designed for one person operation.
- ◆ Before use, please check the function of chopper stopper particularly.
- ◆ Before use, please check the function of machine.
- ◆ Working area shall be free from obstructions and shall be even solid ground like concrete.
- ◆ Please keep cleaning obstructions and fragments from working area.
- ◆ When operation, never reach into splitting zone.
- ◆ Ensure cutters are standing on a firm level surface.
- ◆ Wear eye protection, gloves and safety footwear.
- ◆ Do not allow hands or feet to be between the blades when carrying out any blade adjustments.
- ◆ Disconnect chopper handle (1) when not in use. Detached chopper handle shall be stored with product in proper condition. And chopper shall be laid down in storage.
- ◆ When moving the machine ensure there is no material on the table which will slide off when the machine is tilted.
- ◆ Never use an extension bar on the jacking handle.
- ◆ Avoid warped or 'green' blocks and slabs. These will break prematurely and not where required. All slabs must have flat parallel faces; riven slabs are unsuitable for splitting.
- ◆ Check sharpness of blades regularly.
- ◆ Do not attempt to cut material of a size outside the range of the bedplate.
- ◆ Please note that soft material will break without any audible noise and the pieces may not fall apart. The impression may be that the material has not broken and there may be the temptation to continue pumping. This could cause the top and bottom blades to become buried and may ultimately damage the machine beyond repair. Damage caused in this way will invalidate the warranty.
- ◆ It is not possible to be specific with regard to the types of materials that are suitable for splitting and that are unsuitable. Generally a material that splits quickly, easily and cleanly with a sharp crack-like noise is suitable; a material that splits irregularly and requires a high level of effort is unsuitable. Damage caused by continued attempts to split unsuitable material is not covered by warranty.
- ◆ Not leaving the machine unattended when the operating handle is in working position.

III.ADJUSTMENTS

Before clean or adjustment, chopper handle must be set down to lowest position.

In order to obtain a clean cut (break) it is essential that the upper blade is parallel to the surface of the material to be cut. To ensure this, place the material to be cut across the lower blade. Check that the blade contacts all the way along and then retighten the guide screw (28).

IV.OPERATION

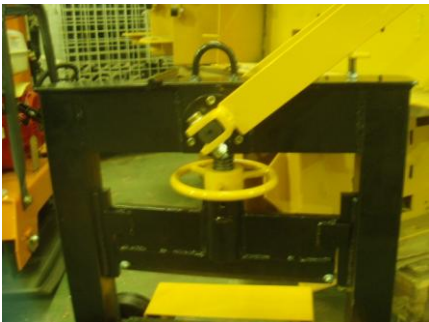
Check the blade adjustment as described in “ADJUSTMENTS”.

Place the material between the blades so that the cutting action is in the centre of the blades.

STEP 1 Ensure the material between the blades. Ensure the product is placed on even solid working area.



STEP 2 Ensure the chopper holder on the chopper stopper



STEP 3 Rotating the hand wheel ensure the blades touch the material



STEP 4 Press the handle



The material will usually break with a sharp audible crack, but see 'CAUTION' note above.

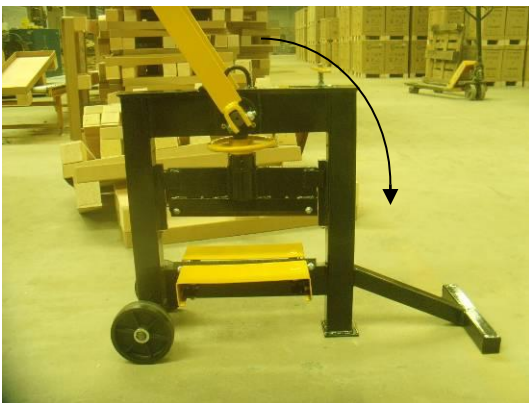
Clear all debris from around blades after each cut. When moving the machine ensure there is no material on the table which will slide off when the machine is tilted.

Beware of splitting block.

Procedure for transportation

Only manual transportation is validated. Product shall not be connected to other equipment for transportation.

STEP 1 Make sure that there is no material on the table there and disconnect the chopper grip (1) down.



STEP 2 Lift the handle, then you can move the machine



V.CHANGING CUTTER BLADES

WARNING: Falling cutter blades will make hazard. When changing, please concentrate and adjust the blades as lower as possible.

If the cutter blades are worn then they will need turning or replacing. Use a long bar as a drift and knock each blade out from one end. Turn each blade so that an unused edge is at the cutting position and knock back into position. If all cutting edges are worn and the blade is to be discarded the new blade may be used as a drift and remain in position after knocking out the worn blade.

VI.SYMBOLS



Read the supplied manual and instructions first .Otherwise increases the risk of injury to operators and other People.



Approved protective goggles.



Wear safety shoes with steel cap.



Protective gloves.



Warning
Not hold the device on slopes.



Note hands injury.



Warning the flying parts.



Note stumble.



CAUTION
Lifting point / binding point.



Note
Ensure the material in the center of the machine.

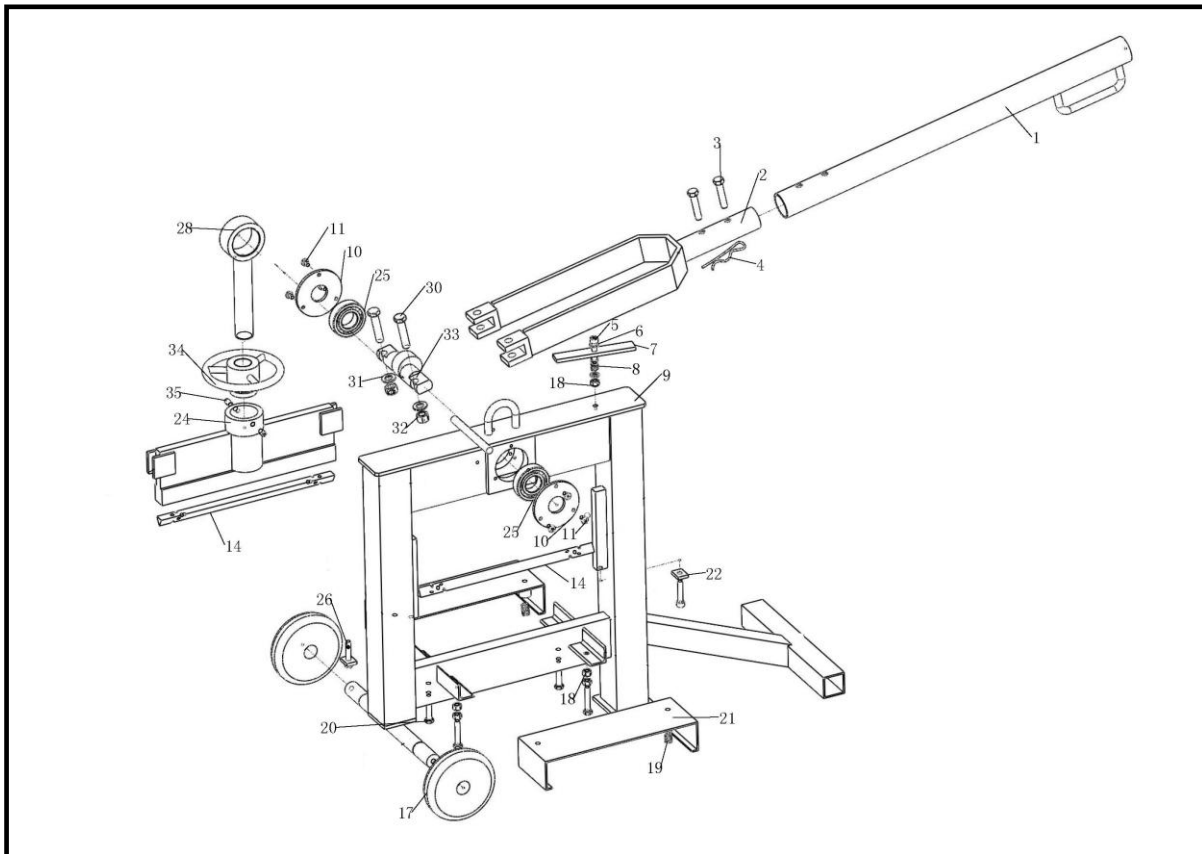
VII.MACHINE TROUBLESHOOTING

SYMPTOM	SOLUTION
Material can not be cut off	Adjust the blade clearance with the material. Rotating the hand wheel ensure the blades touch the material
Handle too tight	Butter where is too tight.



Maintenance required by the professionals and you must use the original accessories.
Discard the product to be carried out by professionals; it can not affect the environment

VIII.SPARE PARTS LIST



PATR NO.	DESCRIPTION	QTY
1	Handle	1
2	Fork	1
3	Pin 10x50	2
4	Spring pin	1
5	Socket head bolt M8x40	3
6	Washer M8	11
7	Stopper	1
8	Spring	1
9	Frame	1
10	Bearing cover	2
11	Screw M6x10	6
14	Blade	2
17	Wheel	2
18	Screw M8	9
19	Spring	4
20	Hexagonal crew M8x45	4
21	Plate	2
22	Blade stopper	2
24	Blade fixing plate	1

PATR NO.	DESCRIPTION	QTY
25	Bearing 6206	2
26	Socket head screw M8x40	3
28	Jackscrew	1
30	Hexagonal screw M12x55	2
31	Washer M12	2
32	Screw M12	2
33	Eccentric shaft	1
34	wheelhandle	1
35	Screw M8x16	2

